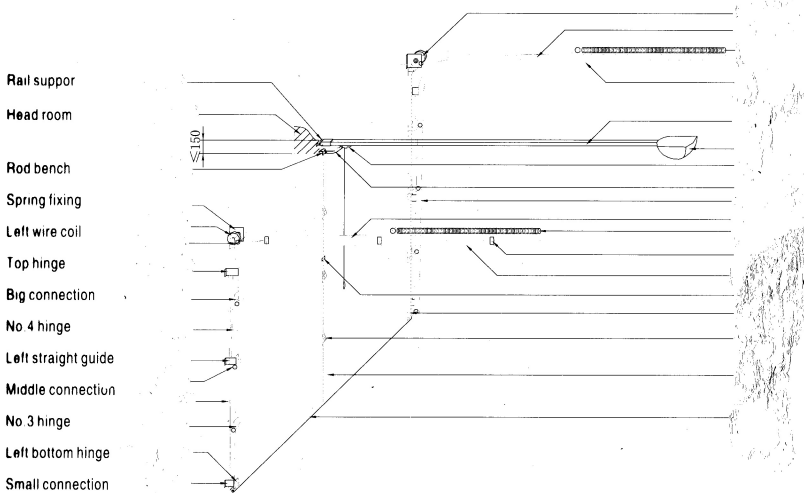
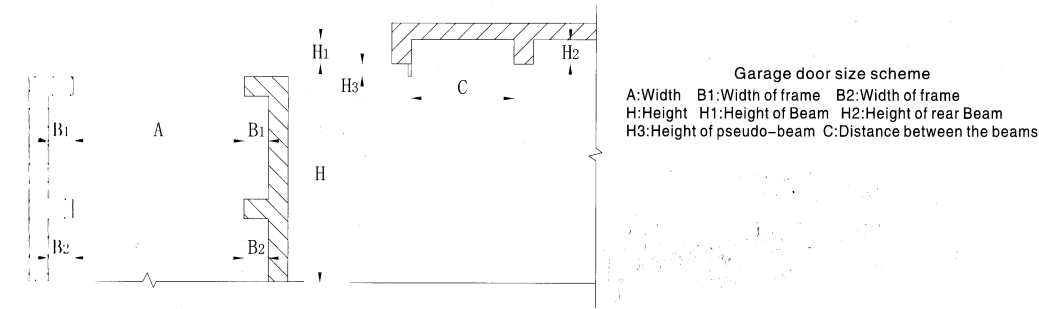


A conceptual diagram to the garage door installation

COPPER PANEL LIFT - GARAGE DOORS

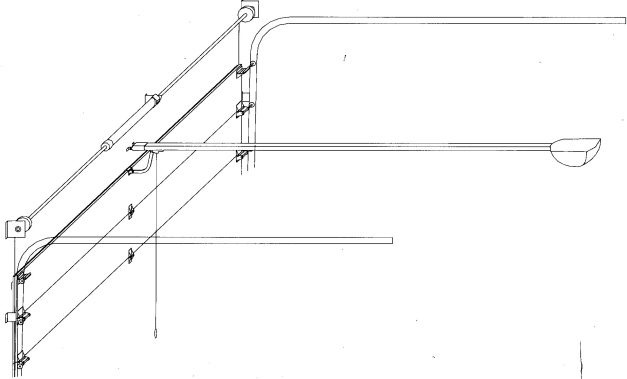
The installation notice to the garage door:

- 1. An artificial buttress should be made in addition when $(B_1 - B_2)$ is less than 70mm.
- 2. The artificial door cross member should be made additionally when $(H_1 - H_2)$ is less than or equal to zero. Therefore it can reach the purpose of $(H_1 + H_3 - H_2) \geq 200\text{mm}$.
- 3. When $(H_1 - H_2)$ is larger than or equal to 350, it should adopt the single track operational structure.
- 4. The double-track operational structure can be adopted under the condition of $200 \leq H_1 - H_2 \leq 350$.

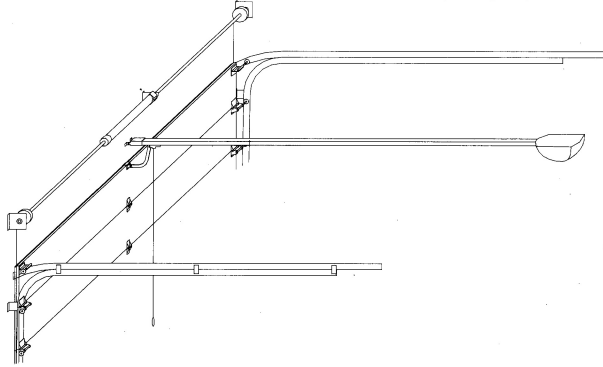


external part has been treated with painting. The internal filler of polyurethane foamed stuff brings about the sound heat isolation and sound damping effect and the enough intensity to the door plates. The hardware parts utilize the heat zinc-plated steel plate for the stamping and manufacture. The perfect balancing system creates the fine balancing condition to the doors. The door operates with facility out of the intellectual door opener. It is also equipped with the multipl security devices in order to further ensure the greater safety in use.

Installation construction scheme of Auto-single guide garage door



Installation construction scheme of Auto-double guide garage door



- Right wire coil
- Right horizontal guide
- Tension spring
- Right bent guide
- Rail
- Door opener
- Clutch
- Rod
- Right straight guide
- Left horizontal guide
- Connection with bent and horizontal
- Left bent guide
- Lock
- Right bottom hinge
- Center hinge
- Door panel
- Hermetic seal

Installation construction scheme of Single-double guide garage door

